

Citywide Inclusive Sanitation: Regulating challenges



ONLINE PANEL INFORMATION

- This online panel will be **recorded and made available “on-demand”** on the IWA website.
- Following the session, you will be sent a **post-panel email** with the on-demand recording, presentation slides, and other information.



- **‘Chat’ box**: please use this for general requests and for interactive activities.
- **‘Q&A’ box**: please use this to send questions to the panelists.
(We will answer these during the discussions)

Please Note: Attendees’ microphones are muted. We cannot respond to ‘Raise Hand’.

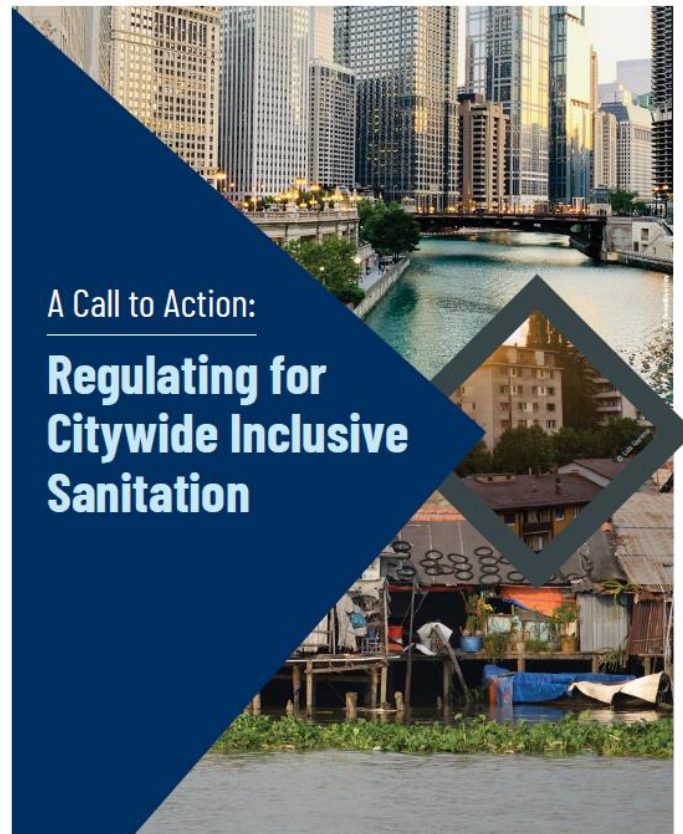
AGENDA

- Welcome by the Chair
- Welcome Keynote from IWA Executive Director
- High-Level Overview of IWA's Call to Action on Regulating for CWIS
- Panel Discussion: What would a regulator's CWIS roadmap look like and include?
 - Q & A from the audience
- Panel Discussion: What is the role of regulators in influencing government policy with regards to CWIS?
 - Q & A from the audience
- Final remarks

WELCOME KEYNOTE - IWA



HIGH-LEVEL OVERVIEW OF IWA'S CALL TO ACTION ON REGULATING FOR CWIS



LEARNING THROUGH THE CASE STUDIES

- Argentina ERAS
 - Brazil AGIR, ARES-PCJ & ARSAE-MG
 - Chile SISS
 - Colombia CRA
 - Kenya WASREB
 - Malaysia, SPAN
 - Philippines MWSS
 - Portugal Azores ERSARA
 - Rwanda RURA
 - Senegal ONAS
 - Uganda KCCA
 - Zambia NWASCO
- Very rich interviews and case studies, analysing them as the next step to deliver 'lessons learnt' in three groups - that is those countries that are:
 - *'Starting the CWIS transition'*
 - *'Ensuring CWIS works'*
 - *'Completing the CWIS journey'*

REGULATING FOR CWIS: A CALL TO ACTION

- How to '**square the circle**' of delivering safely managed sanitation? At an estimated cost of \$105 billion per year, in a sustainable AND affordable manner when affordability (and willingness to pay) is so limited, taxation rates are low and donor transfers are not increasing?
- **Citywide Inclusive Sanitation (CWIS)** is a public service approach to planning and implementing **sewered** and **non-sewered sanitation** – to all
- **Delivering CWIS needs regulators**, because regulators have the expertise of finding the pragmatic balance between the policy and standards set by policymakers and legislatures, and the service providers, who need to access the funding (tariffs & taxes), repayable financing and human resources to deliver the service
- *"Regulation is a policy intervention that aims to promote sector goals in the public interest – balancing the competing interests of the various stakeholders" (Mumssen et. al., 2018).*

'squaring the circle':
*'doing something
that is very difficult
or impossible'*

REGULATING FOR CWIS: A CALL TO ACTION

- Every country has its own regulatory frameworks and structures which straddle a wide spectrum where power and priorities vary significantly, ideally with regulation carried out at appropriate levels for the specific purpose, with ‘no best approach’ (***‘there is not one size fits all’***) but the same target: sanitation.
- The mission of this Call is ***to support and inspire economic regulators to catalyse service delivery in the context of affordable and sustainable tariffs, charges and subsidies***, all with close linkages to water resources and environmental regulation, supported, with enforcement where necessary, through planning and building, environmental health, occupational health & safety and consumer protection regulations
- *Regulating can be undertaken by “Sector Specific National or State Regulator; Multi-Sector Regulator; Self-Regulation at the Municipal Level; Government Department; Regulation by Contract” (Mumssen et. al., 2018)*

ROLES, REGULATIONS AND *REGULATING*

- **REGULATORY ENABLING ENVIRONMENT**

- **Roles and Responsibilities** – that is the governance enabling environment, the range and roles and responsibilities of the various stakeholders, whether Ministries, Government Agencies, Municipalities, Service Providers, SMEs, Citizen Households or supporting Community and Non-Governmental Organisations.

- ***SETTING LICENSED SERVICE PROVIDER REQUIREMENTS***

- **Regulations** – the delivery of services requires standards to be met and many of these standards have to be codified as legal regulations, or ‘bye-laws’, usually established by the local authority or municipality, with responsibility for monitoring and enforcing also formalised.

- ***REGULATING SERVICE PROVIDERS TO DELIVER CWIS***

- ***Regulating*** - the ongoing process of managing the delivery of the regulations, balancing private affordability and willingness to pay against the tariffs and charges for financeability and delivery efficiency of public investments for sustainability.

PANELISTS



**Alyse
Schrecongost**
Bill & Melinda Gates
Foundation
USA

Diego Polania
ADERASA
Colombia

Kate Medicott
WHO
Switzerland

Kelvin Chitumbo
NWASCO
Zambia

Jaime Baptista
LIS-Water
Portugal





PANEL DISCUSSION



Learn more at

www.iwa-network.org/iwa-learn

Virtual 6th International Water Regulators Forum

-  Keynote Speech from IWA President
-  Water Policy Pitches
-  Water Policy Panel: *Looking towards the future of regulation – Mitigation and Adaptation*
-  Reporting Back & Closing Remarks: Key Messages from the Forum